The background of the entire page is a monochromatic teal color. Overlaid on this background is a grayscale image of a hand holding a magnifying glass over a document. Below the hand, a pen and a ruler are visible. The pen has the word 'FEATHERLITE' printed on it. The ruler has '1/2 INCH' and '1 INCH' markings. The overall composition suggests a focus on detail and precision.

**EMILY
CARR**
UNIVERSITY
OF ART + DESIGN

undergraduate
admissions
guide

about us

We are a community of creators, artists, makers, and innovators.

Our undergraduate programs offer opportunities to collaborate and connect through interdisciplinary work with your fellow students and award-winning faculty.

Shape the future of art and design. Join us.



programs

Our [degree programs](#) are here to support you.

MAJORS + MINORS

Art + Text

2D+Experimental

Animation

3D Computer Animation

Ceramics

Communication Design

Critical + Cultural Practices

Curatorial Practice

Drawing

Expanded Practices

Film+Screen Arts

Illustration

Industrial Design

Interaction Design

New Media+Sound Arts

Painting

Photography

Print Media

Sculpture

Social Practice

+Community Engagement

[EXPLORE PROGRAMS](#)

Discover where your passion could lead you.



application timeline

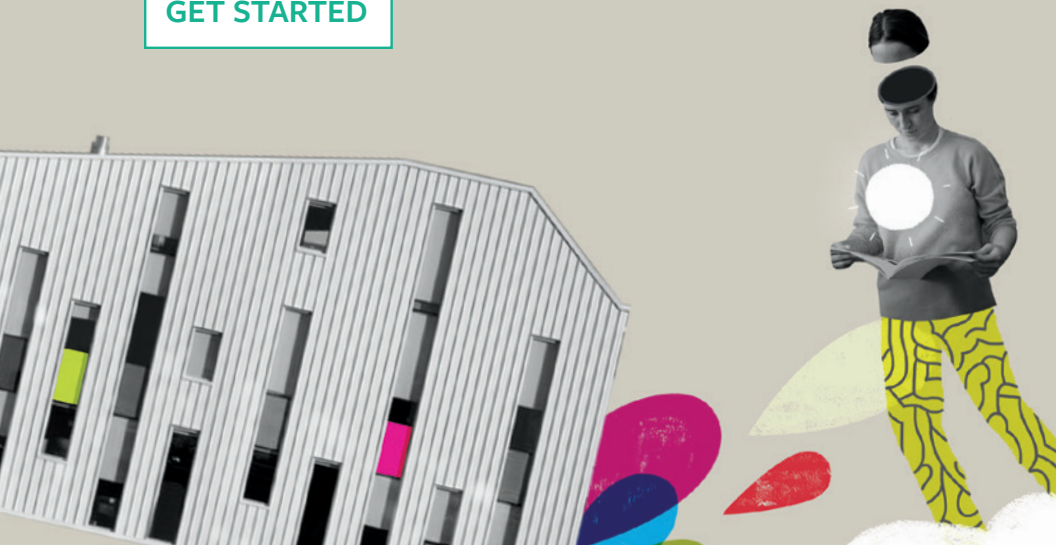
Thinking of applying to Emily Carr University? All applicants must submit a portfolio online as part of the admission process.


Start working on your portfolio at least three to six months before the application deadline. Leave plenty of time for experimentation. For detailed portfolio requirements, visit ecuaad.ca/portfolio.

There are also academic requirements such as transcripts and English Language Proficiency tests that you will need to send during the application period.

Applications open September 15. See our website for application deadlines.

GET STARTED





Illustrations by alumni Tisha Deb Pillai *BMA, '17* and Kunal Sen *BMA, '08*. Tisha and Kunal are award-winning animation directors and motion designers, and co-founders of *Good Bad Habits*.

Design + art direction by Cari Bird, Design Lead, Communications + Marketing, Emily Carr University

Emily Carr University of Art + Design

520 East 1st Avenue
Vancouver, BC Canada
V5T 0H2

admissions@ecuad.ca | ecuad.ca

We acknowledge that Emily Carr University is situated on traditional, ancestral and unceded Coast Salish territory.